



# Goose Creek Consolidated Independent School District

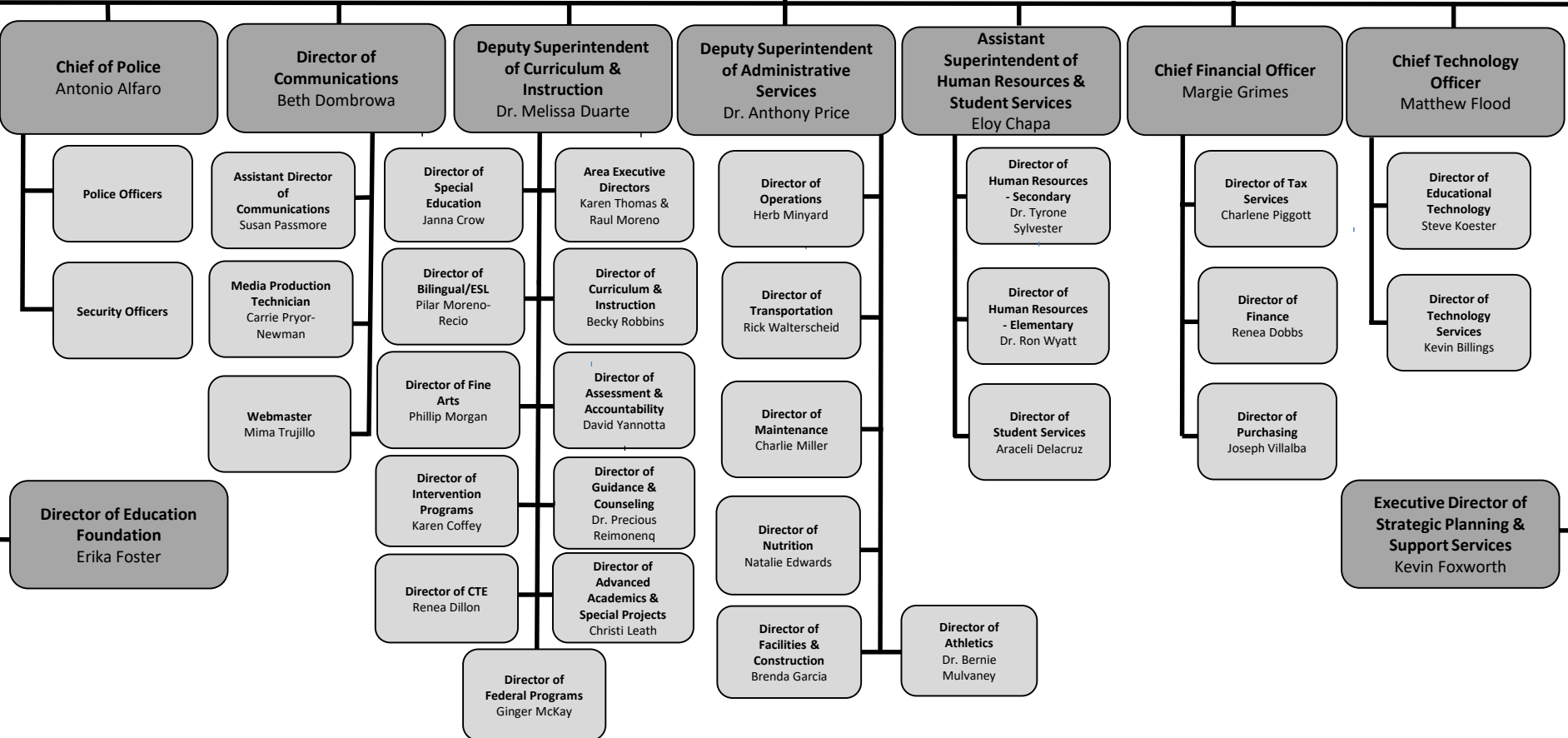
## Superintendent of Schools

2018-2019

### Organizational Chart

**Board of Trustees**  
Administrative Assistant– Noemi Garcia

**Superintendent of Schools**  
Randal O'Brien  
Administrative Assistant – Vicki Ashy

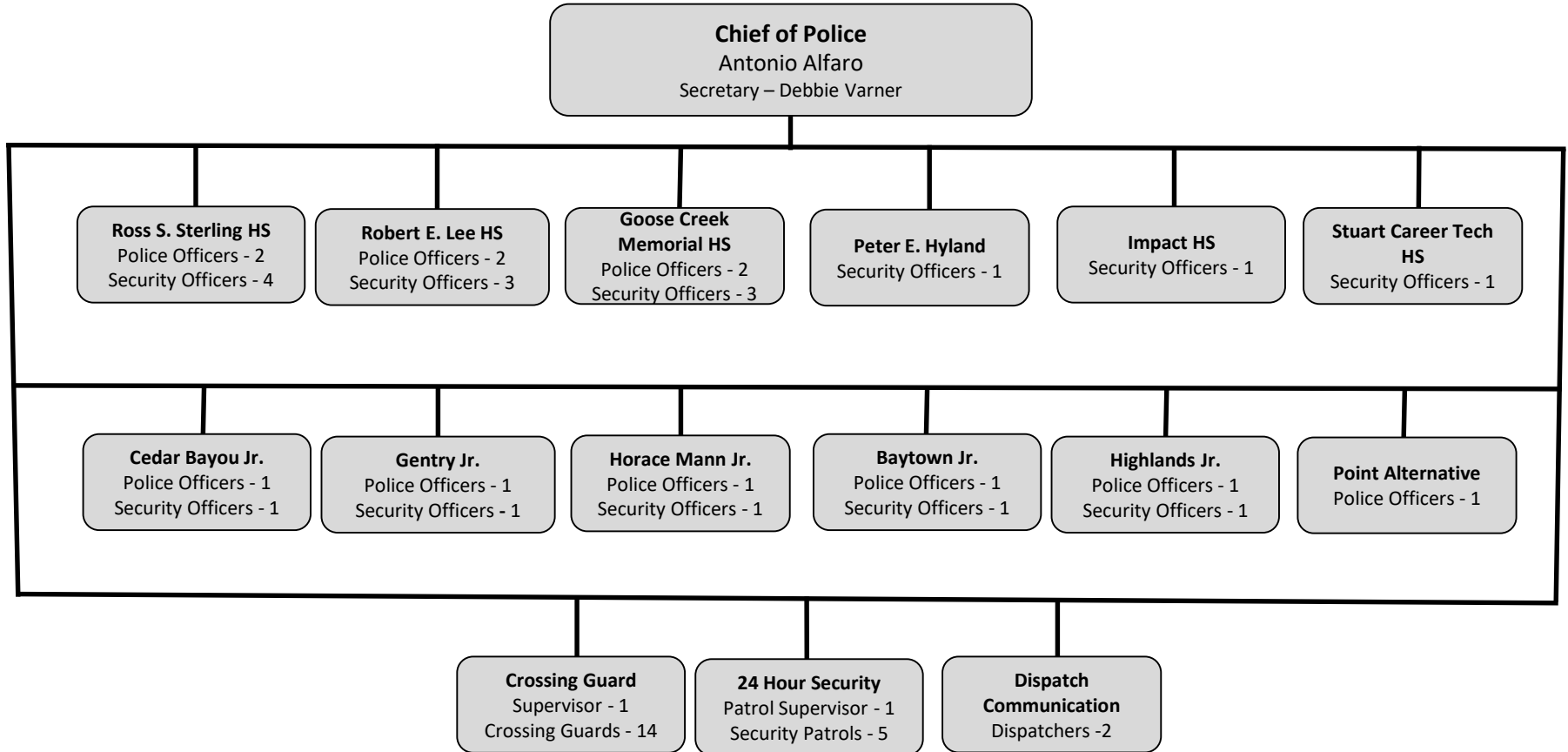




# Goose Creek Consolidated Independent School District Police Department

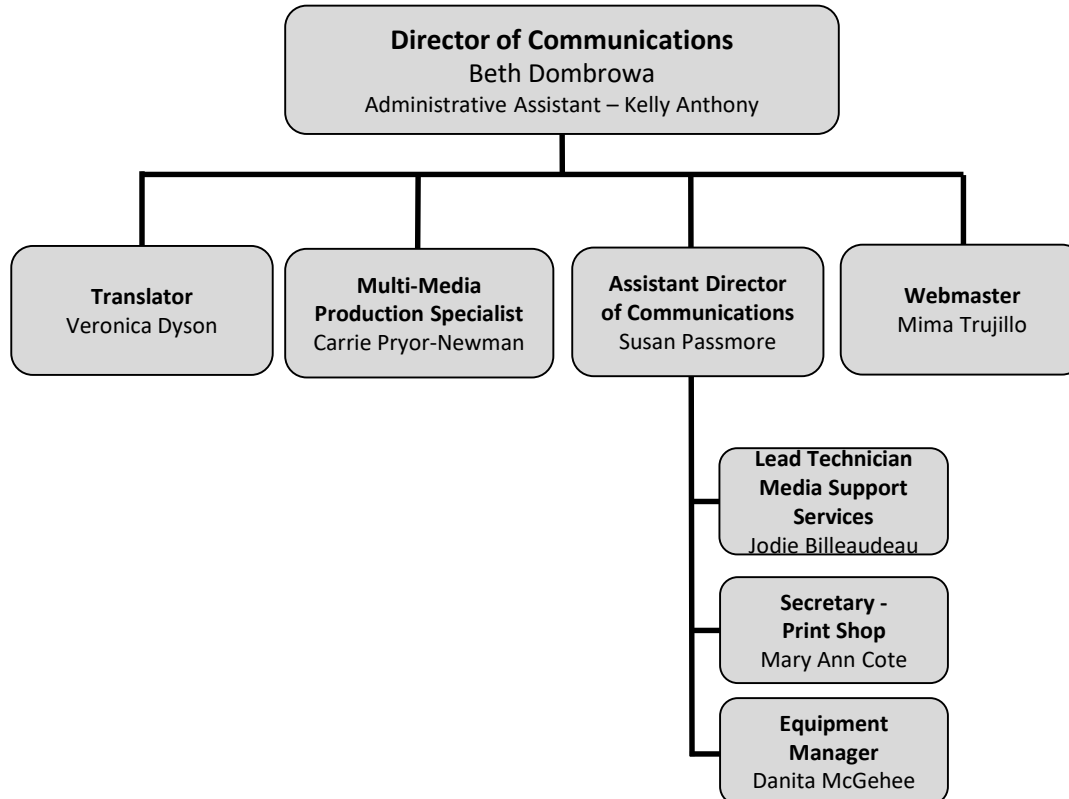
2018-2019

## Organizational Chart





## Organizational Chart





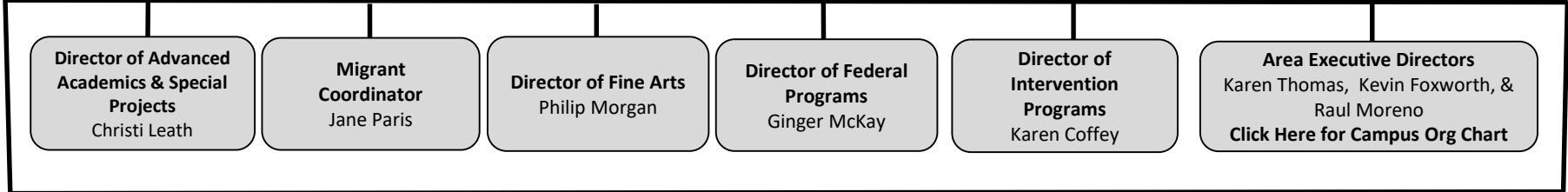
# Goose Creek Consolidated Independent School District

## Curriculum and Instruction

2018-2019

### Organizational Chart

**Deputy Superintendent of Curriculum and Instruction**  
 Dr. Melissa Duarte  
 Administrative Assistant – Jamie Martinez



**Director of Special Education**  
 Janna Crow

**Director of Curriculum & Instruction**  
 Becky Robins

**Director of Assessment & Accountability**  
 David Yannotta

**Director of Career & Technical Education**  
 Renea Dillon

**Director of Guidance & Counseling**  
 Precious Reimonenq

**Director of Bilingual/ESL**  
 Pilar Moreno-Recio

**Compliance & Accountability Coordinator**  
 Dawn Massingill

**ELA Coordinator**  
 Randy Willison

**Student Assessment Coordinator**  
 Kerry Tilton

**CTE Compliance & Accountability Coordinator**  
 Lindsey Marek

**College & Career Coordinator**  
 Travita Godfrey

**LPAC Specialist**  
 Joseph Rodriguez

**Bilingual/ESL Specialist**  
 Monica Perez

**District Wide Programs Coordinator**  
 Jennifer Groce

**Math Coordinator**  
 Amy Henderson

**Work Force Liaison**  
 Monica Swift

**Mental Health Coordinator**  
 Thresa Caldwell

**Bilingual/ESL Specialist**  
 Sheila Chabera

**Bilingual/ESL Specialist**  
 Araceli Garcia

**Evaluation Coordinator**  
 Carmen Figueroa

**Science & Health Coordinator**  
 Kevin Wroblecki

**CTE Specialist**  
 Kelly Start

**Bilingual/ESL Specialist**  
 Migdalia Trevino

**Bilingual/ESL Specialist**  
 Belinda Morales

**Resource & Mainstream Programs Coordinator**  
 Pamela Brooks

**Social Studies Coordinator**  
 Faith Longorio

**CTE Specialist**  
 Carling Caldwell

**CTE Curriculum & Instruction Specialist**  
 Leia Miller

**Tri-County East Regional Day School Program Coordinator**  
 Leanne Simpkins

**Textbook Supervisor**  
 Kelly Skarda

**CTE Specialist**  
 Brandy Artenburn

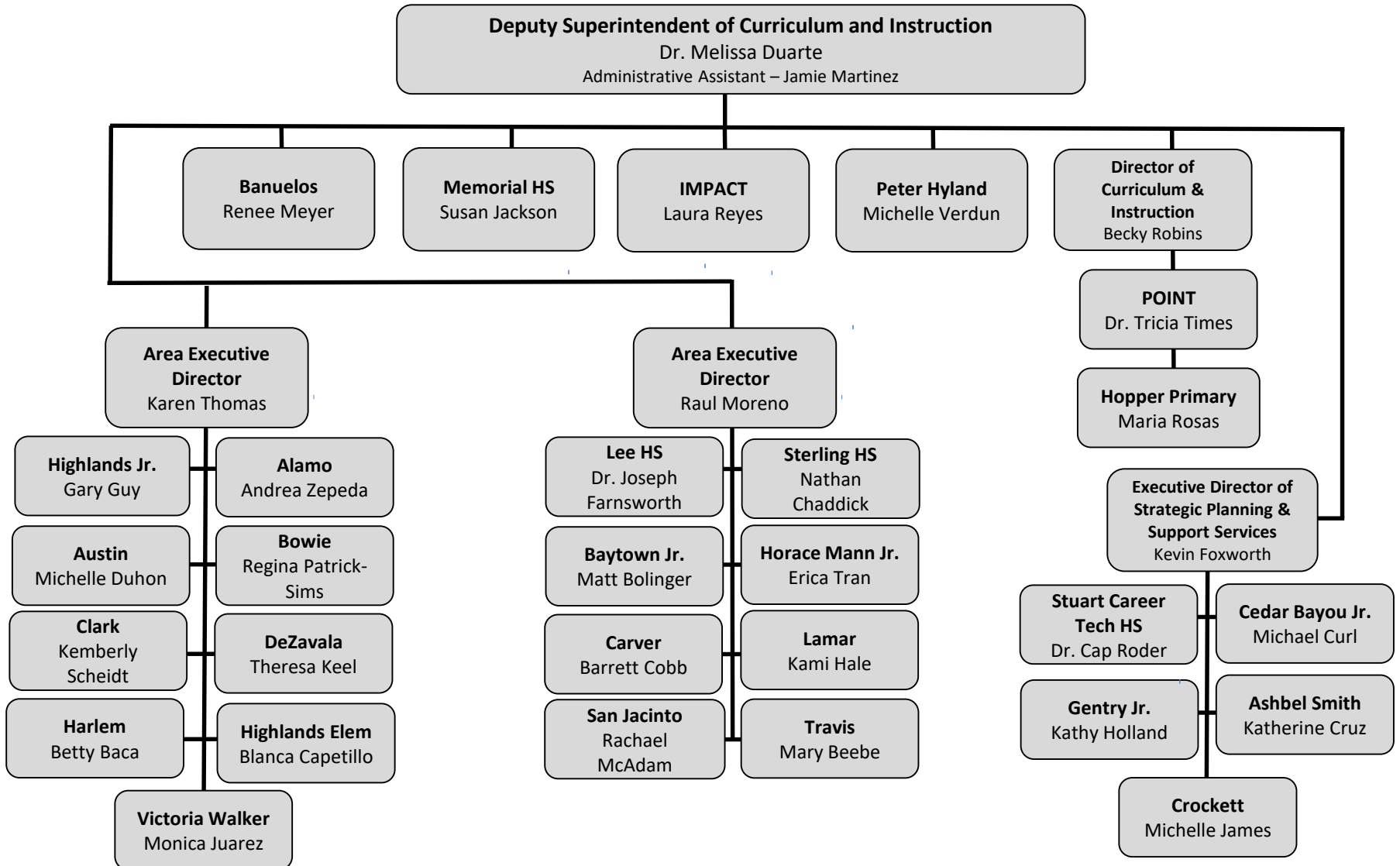


# Goose Creek Consolidated Independent School District

## Area Executive Directors

2018-2019

### Organizational Chart





# Goose Creek Consolidated Independent School District

## Administrative Services

2018-2019

### Organizational Chart

**Deputy Superintendent of Administrative Services**

Dr. Anthony Price

Administrative Assistant – Brenda Villanueva

**Director of Athletics**

Dr. Bernie Mulvaney

**Assistant Director of Athletics**

Lee Martinez

**GCM Coordinator**  
Bren Jones

**REL Coordinator**  
Timothy Finn

**RSS Coordinator**  
Robert Toomer

**Director of Transportation**

Rick Walterscheid

**Lead Trans Coordinator**  
Abel Narvaez

**Supervisor**  
Cheryl Garrett

**Supervisor**  
Robin McGowan

**Supervisor**  
Teresa Mendoza

**Shop Supervisor**  
Jamie Ramon

**Director of Grounds/Operations**

Herb Minyard

**Operations Supervisor**  
Adela Bernal

**Grounds Supervisor**  
Felipe Cervantes

**Director of Facilities Planning & Construction**

Brenda Garcia

**Project Manager**  
Bruce Riggs

**Bond Program Manager**  
Contract

**Energy, Environmental & Emergency Manager**

Michael Rasmussen

**Director of Food Services**

Natalie Edwards

**Asst. Director**  
TBA

**Chef Manager**  
Franchesca Bland

**Community Outreach**  
Amy George

**Human Resources**  
Irma Tyler

**Dietician**  
Chelsea Arkadie

**Director of Maintenance**

Charlie Miller

**Maintenance Supervisor**  
Leo Ryza

**HVAC Supervisor**  
Brian Anderson

**Electrical Supervisor**  
Kim Rosamond

**Sweep Team Supervisor**  
Dr. Donnie Moss

**Office Supervisor**  
Debbie Finn



# Goose Creek Consolidated Independent School District

## Human Resources

2018-2019

### Organizational Chart

**Assistant Superintendent of Human Resources**

Eloy Chapa

Administrative Assistant – Marisol Trevino Pacheco

**Director of Human Resources**

Dr. Tyrone Sylvester

Secretary – Letty Arredondo  
Secondary (6-12)

Teachers/Nurses/Librarians/Paraprofessionals  
Auxiliary Personnel  
(Maintenance, Grounds and Operations)

**Director of Student Services**

Araceli De La Cruz  
Secretary – Stella Gonzalez

**Director of Human Resources**

Dr. Ron Wyatt

Secretary – Kim Wooten  
Elementary (EC-5)  
Teachers/Nurses/Librarians/Paraprofessionals  
Auxiliary Personnel  
(Food Service and Transportation)

**Budget Analyst/  
Position Control**  
Brenda Hernandez

**Certification Officer**  
Renee Napier

**Benefits  
Coordinator**  
Stephanie Myers

**Benefits Clerk**  
Vanessa Williams

**Benefits Clerk**  
Vanessa Garcia

**Substitute Office**  
Tenecia Harrison

**Personnel Clerk**  
Angela Westbay

**Student Services  
Coordinator**  
Kimberly Barnes

**PEIMS Data  
Specialist**  
Tricia Nesselrode

**PEIMS Assistant  
Data Specialist**  
Sherry Bell

**Truancy Specialist**  
Lisa Vaughan  
Secretary - Kim Mendenhall

**Attendance  
Specialist**  
Carrie Fry

**Coordinator of  
Health Services**  
Patricia Pena

**School Nurses**

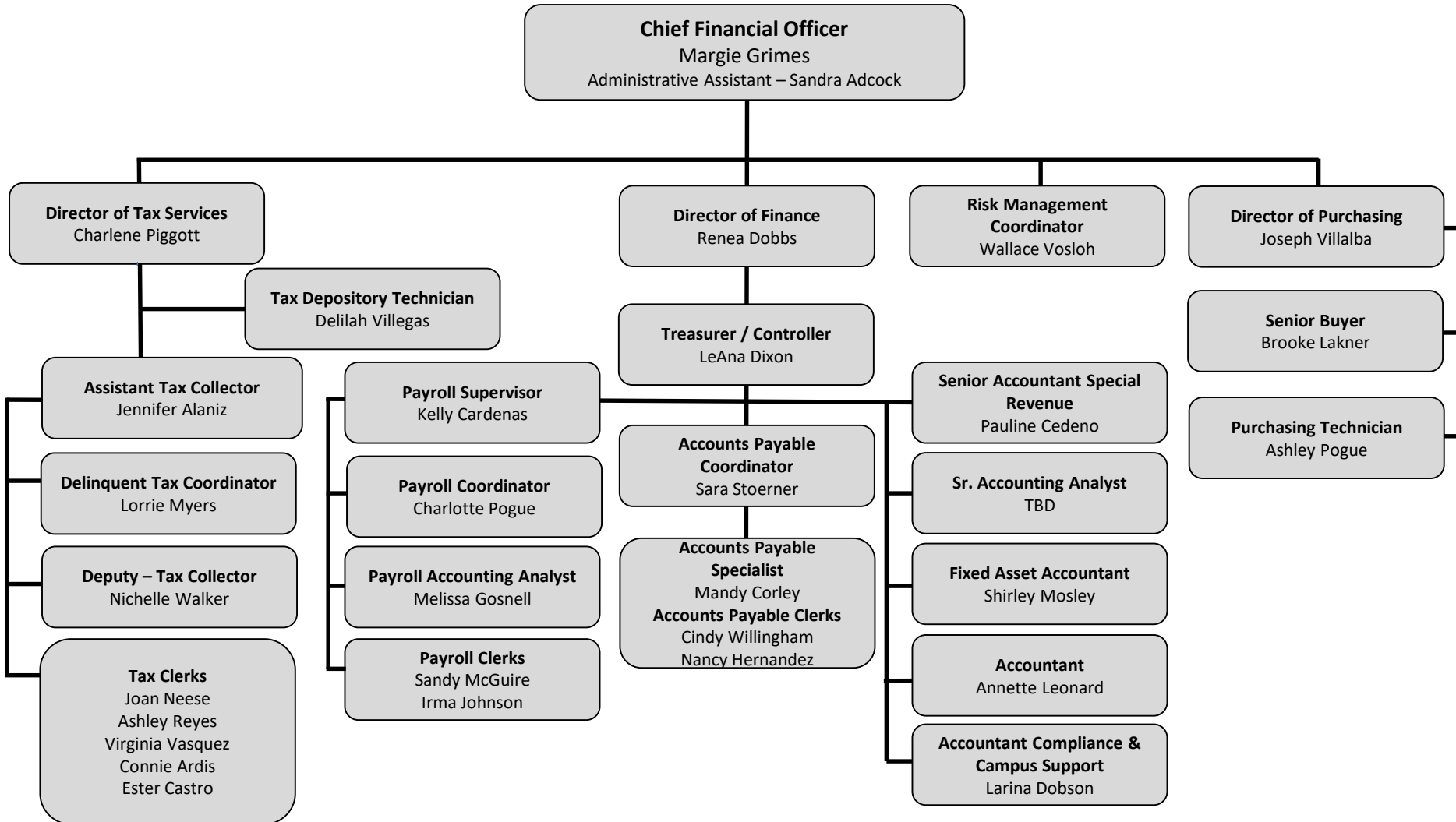
**HR Coordinator**  
Lisa Steele

**Receptionist/Clerk**  
Beverly Tomsic

**Personnel Clerk**  
Ruby Rivas



# Organizational Chart







# Goose Creek Consolidated Independent School District

## Technology Management Systems

2018-2019

### Organizational Chart

